

Round flow cassette Air Conditioning Technical Data FCAG-B



FCAG35BVEB
FCAG50BVEB
FCAG60BVEB
FCAG71BVEB
FCAG100BVEB
FCAG125BVEB
FCAG140BVEB

TABLE OF CONTENTS

FCAG-B



1	Features	4
	FCAG-B	4
2	Specifications	5
3	Safety device settings	7
4	Options	8
5	Dimensional drawings	9
	Dimensional Drawings with Accessories	9
	Dimensional Drawings with Fresh Air Intake	12
6	Centre of gravity	13
7	Piping diagrams	14
8	Wiring diagrams	15
	Wiring Diagrams - Single Phase	15
9	Sound data	16
	Sound Pressure Spectrum	16
10	Air flow patterns	20
	Air flow pattern - Cooling and Heating	20

1 Features

1 - 1 FCAG-B

- › Unified indoor unit can be combined with R-32 and R-410A outdoor units, simplifying stock
- › Combining with R-32 Bluevolution technology, reduces environmental impact with 68% compared to R-410A, leads directly to lower energy consumption thanks to its high energy efficiency and has up to lower 16% refrigerant charge
- › Optional automatic filter cleaning panel results in higher efficiency & comfort and lower maintenance costs.
- › Two optional intelligent sensors improve energy efficiency and comfort
- › Individual flap control: flexibility to suit every room layout without changing the location of the unit!
- › Lowest installation height in the market: 214mm for class 20-63
- › Widest choice ever in decoration panels: designer panels in white (RAL9010) and black (RAL9005) and standard panels in white (RAL9010) with grey louvers or full white
- › Bigger flaps and unique swing pattern improve equal air distribution
- › 5 different fan speeds available for maximum comfort
- › Optional fresh air intake
- › Branch duct discharge allows to optimize air distribution in irregular shaped rooms or to supply air to small adjacent rooms
- › Standard drain pump with 675mm lift increases flexibility and installation speed



- | | | | | | | | | |
|--|---|--|---|--|--|--|--|---|
| 
Infrastructure cooling | 
Onecta app (optional) | 
Presence & floor sensor | 
Home leave operation | 
Fan only | 
Auto-cleaning filter (optional) | 
Draught prevention | 
Auto cooling-heating changeover | 
Whisper quiet |
| 
Ceiling soiling prevention | 
Individual flap control | 
Vertical auto swing | 
Fan speed steps (5 steps + auto) | 
Dry programme | 
UV Streamer kit (optional) | 
Air filter | 
Weekly timer (optional) | 
Infrared remote control (optional) |
| 
Wired remote control (optional) | 
Centralised control (optional) | 
Auto-restart | 
Self diagnosis | 
Drain pump kit (standard) | 
Twin/triple/double twin application | 
Multi model application | 
VRV for residential application | |

2 Specifications

2 - 1 Specifications

Technical specifications				FCAG35B	FCAG50B	FCAG60B	FCAG71B	FCAG100B	FCAG125B	FCAG140B	
Cooling capacity	Sensible capacity	Nom.	kW	2.45	3.45	3.89	4.40	6.16	8.71	8.68	
	Latent capacity	Nom.	kW	1.05	1.55	1.81	2.40	3.34	3.39	4.72	
	Total capacity	Nom.	kW	3.50	5.00	5.70	6.80	9.50	12.10	13.40	
Heating capacity	Total capacity	Nom.	kW	4.2	6.0	7.0	7.5	10.8	13.5	15.5	
Power input - 50Hz	Cooling	Nom.	kW	0.04			0.05	0.08	0.17		
	Heating	Nom.	kW	0.04			0.05	0.08	0.17		
Casing	Material	Galvanised steel plate									
Dimensions	Unit	Height	mm	204				246			
		Width	mm					840			
		Depth	mm					840			
	Packed unit	Height	mm	220				260			
		Width	mm					882			
		Depth	mm					882			
Weight	Unit		kg	18	19	21	21	23	23	26	
	Packed unit		kg	20	21	23	23	26	26	26	
Heat exchanger	Inside length		mm	2,134				2,090			
	Outside length		mm	2,181				2,184			
	Rows	Quantity		2				3			
	Fin pitch		mm					1.2			
	Passes	Quantity		4	6	12	12	14	14	14	
	Face area		m ²	0.278	0.366	0.371	0.371	0.464	0.464	0.464	
	Stages	Quantity		9	12	12	12	15	15	15	
	Empty tubeplate hole	Quantity		0							
	Tube type			Ø5 HI-XA							
	Fin	Type		Cross fin coil (multi slit fins and hi-XA tubes)							
Fan	Type			Turbo fan							
	Quantity			1							
	Air flow rate	Cooling	High	m ³ /min	12.9	14.6	14.9	15.1	22.7	27.2	27.2
				cfm	446	516	526	533	802	961	
			Medium	m ³ /min	10.6	11.8	12.2	13	17.8	20.4	
			cfm	374	417	431	456	629	720		
		Low	m ³ /min	8.8	9.4	9.6	10.8	13	13.1		
			cfm	311	332	339	381	459	463		
	Heating		High	m ³ /min	14.1	14.6	14.9	15.1	23	27	
		cfm		498	516	526	533	812	954		
		Medium	m ³ /min	11.6	11.8	12.2	12.9	18.1	20.2		
	Fan	Air flow rate	Heating	Medium	cfm	410	417	431	456	639	713
Low				m ³ /min	9.4	9.6	10.8	13.2	13		
			cfm	332	339	381	466	459			
Fan motor	Quantity			1							
	Model			DFB05A2VB				DFB11A2VB			
	Speed	Steps		5							
Output	High	W		48				106			
Sound power level	Cooling		dB(A)	49		51		54		58	
	Heating		dB(A)	49		51		54		58	
Sound pressure level	Cooling	High	dB(A)	31	33	35	37	41	41		
			Medium	dB(A)	29		31	33	35		
		Low	dB(A)	27		28		29			
	Heating	High	dB(A)	31		33		37	41		
			Medium	dB(A)	29		31	33	35		
		Low	dB(A)	27		28		29			
Refrigerant	Type		R-32 / R-410A								
Piping connections	Sound absorbing insulation		Foamed polyurethane								
	Liquid	Type		Flare connection							
		OD	mm	6.35				9.52			
	Gas	Type		Flare connection							
		OD	mm	9.52	12.7				15.9		
Drain			VP25 (O.D. 32 / I.D. 25)								
Heat insulation			Foamed polystyrene / Foamed polyethylene								
Decoration panel	Model		BYCQ140E2W1 / BYCQ140E2W1W / BYCQ140E2W1B								
	Dimensions	Height	mm	65							
		Width	mm	950							
		Depth	mm	950							
	Weight		kg	5.5							

2 Specifications

2 - 1 Specifications

2

Technical specifications			FCAG35B	FCAG50B	FCAG60B	FCAG71B	FCAG100B	FCAG125B	FCAG140B
Decoration panel 2	Model		BYCQ140E2GFW1 / BYCQ140E2GFW1B						
	Dimensions	Height	mm	148					
		Width	mm	950					
		Depth	mm	950					
	Weight	kg	10.3						
Decoration panel 3	Model		BYCQ140E2P / BYCQ140E2PB						
	Dimensions	Height	mm	106					
		Width	mm	950					
		Depth	mm	950					
Decoration panel 3	Weight	kg	6.5						
Air filter	Type		Resin net						
Safety devices	Item	01	PC board fuse						
		02	Fan motor overcurrent protector						
Control systems	Infrared remote control		BRC7FA532F / BRC7FB532F / BRC7FA532FB / BRC7FB532FB						
	Wired remote control		BRC1D528 / BRC1E53A7 / BRC1E53B7 / BRC1E53C7 / BRC1H81W/S / BRC1H51(9)W/S/K7 / BRC2E52C7 / BRC3E52C7						

Standard accessories: Installation manual;Quantity: 1;

Standard accessories: Washer for hanger bracket;Quantity: 8;

Standard accessories: Operation manual;Quantity: 1;

Standard accessories: Wire clamp material;Quantity: 7;

Standard accessories: Clamp for drain hose;Quantity: 1;

Standard accessories: Clamps;Quantity: 1;

Standard accessories: Drain hose;Quantity: 1;

Standard accessories: Installation guide;Quantity: 1;

Standard accessories: Insulation for fitting;Quantity: 2;

Standard accessories: Screws;Quantity: 4;

Standard accessories: Sealing pads;Quantity: 1;

Electrical specifications			FCAG35B	FCAG50B	FCAG60B	FCAG71B	FCAG100B	FCAG125B	FCAG140B
Power supply	Phase		1~						
	Frequency	Hz	50/60						
	Voltage	V	220-240/220						

The sound power level is an absolute value indicating the power which a sound source generates. |

The BYCQ140E2W1W has white insulations. Be informed that formation of dirt on white insulation is visibly stronger and that it is consequently not advised to install the BYCQ140E2W1W decoration panel in environments exposed to concentrations of dirt. |

BYCQ140E2W1: pure white standard panel with grey louvers; BYCQ140E2W1W: pure white standard panel with white louvers; BYCQ140E2W1B: black standard panel with black louvers.

3 Safety device settings

3 - 1 Safety Device Settings

FCAG-B

Safety devices		FCAG35-71BVEB	FCAG100-140BVEB
PCB fuse		250V, 3.15A	---
Fan motor overcurrent protection	Nominal	0,92A	1,49A
Fan motor thermal protector	Maximum	---	---
Drain pump fuse		---	---

Safety devices		FCAHG71-140HVEB
PCB fuse		---
Fan motor overcurrent protection	Nominal	1,49A
Fan motor thermal protector	Maximum	---
Drain pump fuse		---

4D121690

4 Options

4 - 1 Options

4

FCAG-B
FCAHG-H

Option kit	Product name	Availability	
		FCAG35-140R/VEB FCAHG71-140R/VEB	RYQD01.25R/VEB
Standard	BYCQ140E2W1	✓	✓
White	BYCQ140E2W1W ②	✓	✓
Black	BYCQ140E2W1B ③	✓	✓
UV streamer kit	BAEF125AWB ⑧ ⑨	✓	✓
Replacement air filter (part of UV streamer kit)	BAF55A125 ⑩ ⑪	✓	✓
1- filter(s) in the box	BAF552AA160 ⑫ ⑬	✓	✓
5- filter(s) in the box	BAF552AA160-5 ⑭ ⑮	✓	✓
10- filter(s) in the box	BAF552AA160-10 ⑯ ⑰	✓	✓
Designer decoration panel	BYCQ140E2P ⑱	✓	✓
Designer decoration panel Black	BYCQ140E2PB ⑲	✓	✓
Self-cleaning decoration panel (with fine filter)	BYCQ140E2GFW1 ⑳ ㉑ ㉒ ㉓	✓	✓
Self-cleaning decoration panel (with fine filter) Black	BYCQ140E2GFW1B ㉔ ㉕ ㉖	✓	✓
Long-life replacement filter	KAFF551D160 ⑳	✓	✓
Chamber (part of fresh air intake kit (30% fresh air))	KDDP55C160-1 ㉗ ㉘	✓	✓
Diffuser from chamber to duct (part of fresh air intake kit (20% fresh air))	KDDP55D160-2 ㉙ ㉚	✓	✓
Air discharge outlet sealing member	KDBHQ56B140 ㉛ ㉜	✓	✓
Sensor kit	BRVQ140B8 ㉝	✓	✓
Sensor kit Black	BRVQ140B8B ㉞	✓	✓
Sensor kit (for designer decoration panel)	BRVQ140C8 ㉟	✓	✓
Sensor kit (for designer decoration panel) Black	BRVQ140C8B ㊱	✓	✓
Extension wire harness	EWHR1 ㊲	✓	✓
Wireless remote control	BRC7FA532F ㉿ ㊰ ㊱	✓	✓
Wireless remote control Black	BRC7FA532FB ㊲ ㊳	✓	✓
Wireless remote control (for designer decoration panel)	BRC7FB532F ㊴ ㊵	✓	✓
Wireless remote control (for designer decoration panel) Black	BRC7FB532FB ㊶ ㊷	✓	✓
Wired remote control	BRC1D528 ㊸ ㊹	✓	✓
Wired remote control	BRC1H82W/S	✓	✓
Wired remote control	BRC1E53A7 ㊺ ㊻, BRC1E53B7 ㊼, BRC1E53C7 ㊽ ㊾, BRC1H52W/K/S	✓	✓
Simplified remote control (with operation mode selector button)	BRC2E52C7 ㊿ ㋀ ㋁	✓	✓
Simplified remote control (without operation mode selector button)	BRC3E52C7 ㋂ ㋃ ㋄	✓	✓
Wiring adaptor for electrical appendices -1-	KRP1BA58 ㋅ ㋆	✓	✓
Wiring adaptor for electrical appendices -2-	KRP4A53 ㋇ ㋈ ㋉	✓	✓
Wiring adaptor (hour meter)	EKRP1C12 ㋊ ㋋	✓	✓
Remote sensor	KRS01-SB	✓	✓
Installation box for adaptor PCB	KRP1H08A ㋌	✓	✓
Central remote control	DCS302C51	✓	✓
Unified ON/OFF controller	DCS301B51	✓	✓
Electrical box with earth terminal (2- blocks)	KIB21AA	✓	✓
Electrical box with earth terminal (3- blocks)	KIB31AA	✓	✓
PCB for multi-tenant indoor units	DTA114A61 ㋍	✓	✓
Touch Controller	DCS601C51	✓	✓
Digital input adaptor	BRP7A53 ㋎ ㋏	✓	✓
WLAN adaptor for smartphones	BRP069C82 ㋐ ㋑ ㋒	✓	✓
Intelligent Touch Manager	DCM601A51	✓	✓
Intelligent Tablet Controller	DCS601A51	✓	✓
Wire harness for external wireless temperature sensor	EKEWTSC-2 ㋓	✓	✓

3D121704H

FCAG-B
FCAHG-H

Notes

- ① All options are kits
- ② This option has white insulation.
Be aware that dirt formation is more easily visible on white insulation.
It is recommended not to install this option in environments with a high concentration of dirt.
- ③ To be able to control option -BYCQ140E2GFW1 / BYCQ140E2GFW1B-, controller -BRC1E / BRC1H- is required.
- ④ This option cannot be used with multi, and non-inverter split outdoor units.
- ⑤ This option is suitable for all applications, except for use in environments that are greasy, or have high humidity.
- ⑥ Option cannot be combined with -BYCQ140E2GFW1 / BYCQ140E2GFW1B-.
- ⑦ Both parts of the fresh air intake kit are required for each unit.
- ⑧ Only possible in combination with -BYCQ140E2W1 / BYCQ140E2W1W / BYCQ140E2GFW1-
- ⑨ Only possible in combination with -BYCQ140E2W1B / BYCQ140E2GFW1B-
- ⑩ Only possible in combination with -BYCQ140E2W1 / BYCQ140E2W1W-
- ⑪ Only possible in combination with -BYCQ140E2W1B-
- ⑫ Not recommended because of its limited functionality.
- ⑬ Included languages are: English, German, French, Italian, Spanish, Portuguese, and Dutch.
- ⑭ Included languages are: English, Czech, Croatian, Hungarian, Slovenian, Romanian, and Bulgarian.
- ⑮ Included languages are: English, Russian, Greek, Turkish, Polish, Albanian, and Slovak.
- ⑯ Language pack -3- of controller -BRC1E53C7- is different from that of controller -BRC2/3E52C7-.
- ⑰ Included languages are:
Language pack -1-: English, German, French, Dutch, Spanish, Italian, and Portuguese.
With PC cable -EKPPCAB3- in combination with the Updater PC software, you can additionally change the language to:
Language pack -2-: English, Bulgarian, Croatian, Czech, Hungarian, Romanian, and Slovenian.
Language pack -3-: English, Greek, Polish, Russian, Serbian, Slovak, and Turkish.
- ⑱ Requires installation box for adaptor PCB -KRP1H98A-.
- ⑲ Option cannot be combined with -BRP069C82 / BRP069C82-.
- ⑳ Only possible in combination with remote control -BRC2/3E52C7, BRC1E53A/B/C7, BRC1H52W/K/S, BRC1H82W/S-.
- ㉑ Only possible in combination with wired or wireless remote control (e.g. -BRC1E, BRC1H, BRC7F-)
- ㉒ When combining the WLAN adapter (-BRP069C82 / BRP069B82-) with a self-cleaning decoration panel (-BYCQ140E2GFW1 / BYCQ140E2GFW1B-), option -EWHR1- is required.
- ㉓ Option cannot be combined with -KRP4A53-.
- ㉔ Only possible in combination with -BYCQ140E2P-
- ㉕ Only possible in combination with -BYCQ140E2PB-
- ㉖ The active airflow circulation function is not available for this controller.
- ㉗ -EKEWTSC-2- is a wire harness for the connection of option -K.RSS-.
-K.RSS- is not an official option. Sales for this option are an SBU responsibility.
- ㉘ Option cannot be combined with -BYCQ140E2W1B, BYCQ140E2P, BYCQ140E2PB, BYCQ140E2GFW1, BYCQ140E2GFW1B, KAFF551D160, KDDP55C160-1, KDDP55D160-2, KDBHQ56B140, BAF552AA160, BAF552AA160-5, BAF552AA160-10-
- ㉙ Option cannot be combined with -BYCQ140E2P, BYCQ140E2PB, BYCQ140E2GFW1, BYCQ140E2GFW1B, KAFF551D160, KDDP55C160-1, KDDP55D160-2, KDBHQ56B140, BAEF125AWB, BAF55A125-.
- ㉚ Option cannot be combined with -BAEF125AWB, BAF55A125, BAF552AA160, BAF552AA160-5, BAF552AA160-10-
- ㉛ Option cannot be combined with -BAEF125AWB, BAF55A125-.
- ㉜ Do NOT install in places that require a high ceiling mode setting and 2/3 way blow mode setting of the indoor unit.

3D121704H

5 Dimensional drawings

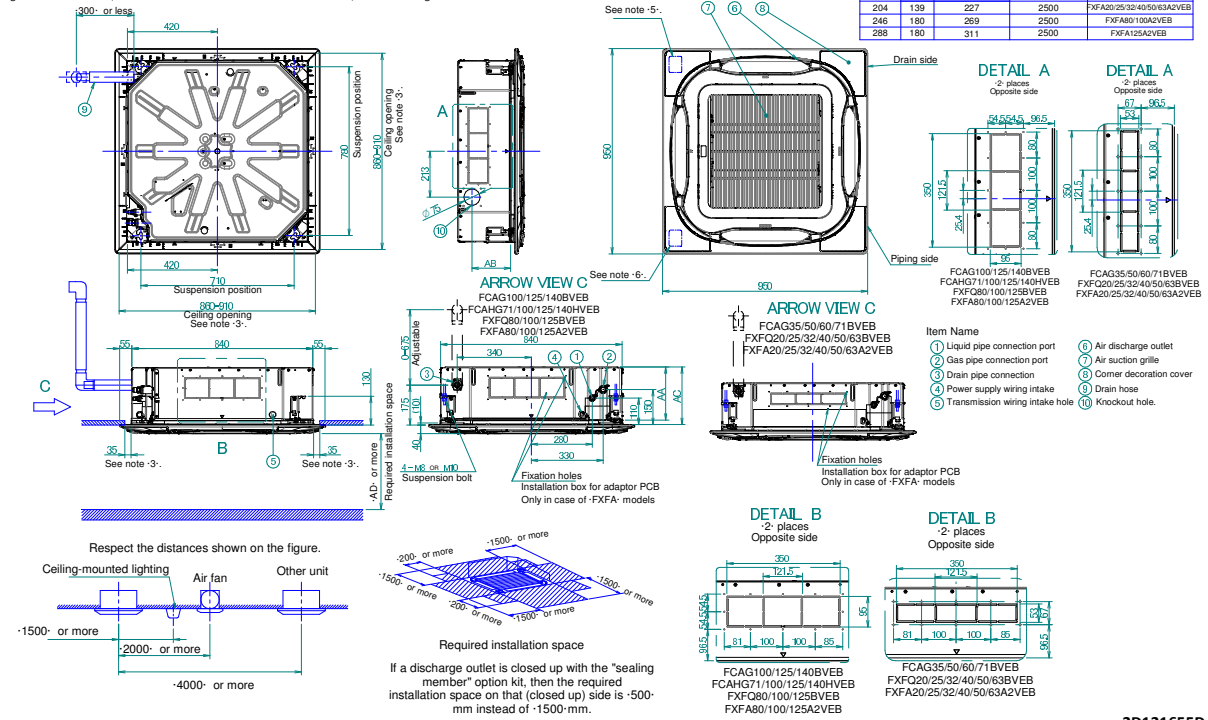
5 - 1 Dimensional Drawings with Accessories

FCAG-B Standard panel

Notes

- Location of nameplate
The unit nameplate is located on the control box cover.
The decoration panel nameplate is located on the piping-side panel frame, under the corner cover.
- When installing optional accessories, refer to their respective documentation.
- Make sure the distance between the ceiling and the cassette does not exceed 35 mm.
The maximum ceiling opening is 910 mm.
- When the conditions in the ceiling exceed 30°C ambient temperature and 80% relative humidity, or when fresh air is inducted into the ceiling, additional insulation is required (polyethylene foam, thickness >10 mm).
- When installing a sensor kit, there will be a sensor on this location. For details, see the drawing of the sensor kit.
- When installing a wireless controller, there will be a receiver on this location. For details, see the drawing of the wireless controller.

Cassette height	Minimal installation height			Required installation space	Model
	AA	AB	AC		
204	139	227	2700	2700	FCAG35/50/60/71BVEB
246	180	269	2700	2700	FCAG100/125/140HVEB
288	180	311	2700	2700	FCAG100/125/140HVEB
204	139	227	2700	2700	FXFG20/25/32/40/50/63BVEB
246	180	269	2700	2700	FXFB08/100BVEB
288	180	311	2700	2700	FXFG125BVEB
204	139	227	2500	2500	FXFA20/25/32/40/50/63A2VEB
246	180	269	2500	2500	FXFA80/100A2VEB
288	180	311	2500	2500	FXFA125A2VEB



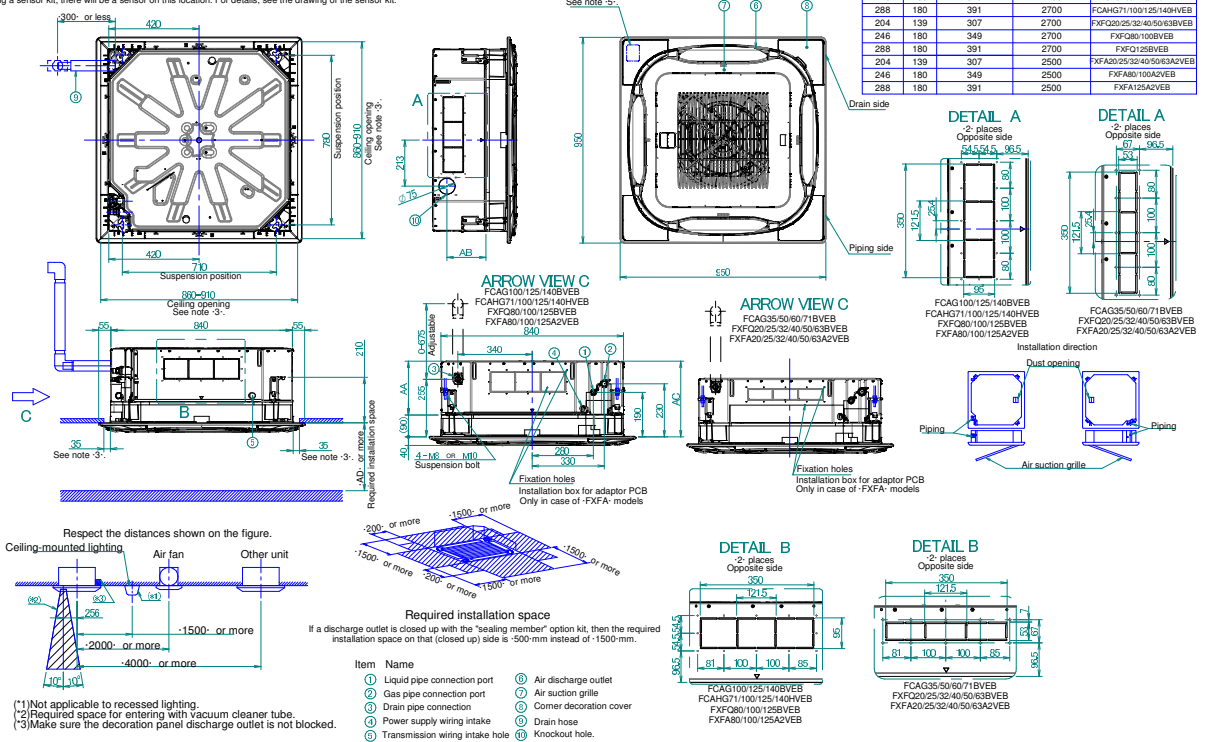
2D121655D

FCAG-B Auto cleaning panel

Notes

- Location of nameplate
The unit nameplate is located on the control box cover.
The decoration panel nameplate is located on the piping-side panel frame, under the corner cover.
- When installing optional accessories, refer to their respective documentation.
- Make sure the distance between the ceiling and the cassette does not exceed 35 mm.
The maximum ceiling opening is 910 mm.
- When the conditions in the ceiling exceed 30°C ambient temperature and 80% relative humidity, or when fresh air is inducted into the ceiling, additional insulation is required (polyethylene foam, thickness >10 mm).
- When installing a sensor kit, there will be a sensor on this location. For details, see the drawing of the sensor kit.

Cassette height	Minimal installation height			Required installation space	Model
	AA	AB	AC		
204	139	307	2700	2700	FCAG35/50/60/71BVEB
246	180	349	2700	2700	FCAG100/125/140BVEB
288	180	391	2700	2700	FCAG100/125/140BVEB
204	139	307	2700	2700	FXFG20/25/32/40/50/63BVEB
246	180	349	2700	2700	FXFB08/100BVEB
288	180	391	2700	2700	FXFG125BVEB
204	139	307	2500	2500	FXFA20/25/32/40/50/63A2VEB
246	180	349	2500	2500	FXFA80/100A2VEB
288	180	391	2500	2500	FXFA125A2VEB



2D121658D

5 Dimensional drawings

5 - 1 Dimensional Drawings with Accessories

5

FCAG-B FCAHG-H Designer panel

Notes

- Location of nameplate
The unit nameplate is located on the control box cover.
The decoration panel nameplate is located on the piping-side panel frame, under the corner cover.
- When installing optional accessories, refer to their respective documentation.
- Make sure the distance between the ceiling and the cassette does not exceed 35 mm.
The maximum ceiling opening is 910 mm.
- When the conditions in the ceiling exceed 30°C ambient temperature and 80% relative humidity, or when fresh air is inducted into the ceiling, additional insulation is required (polyethylene foam, thickness ≥ 10 mm).
- When installing a sensor kit, there will be a sensor on this location. For details, see the drawing of the sensor kit.
- When installing a wireless controller, there will be a receiver on this location. For details, see the drawing of the wireless controller.

Cassette height	Minimal installation height	Required installation space	Model	
AA	AB	AC	AD	
204	139	269	2700	FCAG35/50/60/71/8VBE
246	180	311	2700	FCAG100/125/140/16VBE
288	180	353	2700	FCAHG71/100/125/140/16VBE
204	139	269	2700	FXFQ20/25/32/40/50/63/8VBE
246	180	311	2700	FXFQ80/100/125VBE
288	180	353	2700	FXFQ125/150VBE
204	139	269	2500	FXFA20/25/32/40/50/63/8VBE
246	180	311	2500	FXFA80/100/125VBE
288	180	353	2500	FXFA125/150VBE

DETAIL A
-2- places
Opposite side

DETAIL A
-2- places
Opposite side

ARROW VIEW C
FCAG100/125/140/16VBE, FCAHG71/100/125/140/16VBE, FXFQ80/100/125/150VBE, FXFA80/100/125/150VBE

ARROW VIEW C
FCAG35/50/60/71/8VBE, FXFQ20/25/32/40/50/63/8VBE, FXFA20/25/32/40/50/63/8VBE

Item Name

- ① Liquid pipe connection port
- ② Gas pipe connection port
- ③ Drain pipe connection
- ④ Power supply wiring intake
- ⑤ Transmission wiring intake hole
- ⑥ Air discharge outlet
- ⑦ Flat grille assembly
- ⑧ Corner decoration cover
- ⑨ Drain hose
- ⑩ Knockout hole.

Required installation space

Respect the distances shown on the figure.

Ceiling-mounted lighting, Air fan, Other unit

1500 - or more, 2000 - or more, 4000 - or more

200 - or more, 1500 - or more, 1500 - or more, 2000 - or more, 1500 - or more

FCAG100/125/140/16VBE, FCAHG71/100/125/140/16VBE, FXFQ80/100/125/150VBE, FXFA80/100/125/150VBE

FCAG35/50/60/71/8VBE, FXFQ20/25/32/40/50/63/8VBE, FXFA20/25/32/40/50/63/8VBE

FCAG100/125/140/16VBE, FCAHG71/100/125/140/16VBE, FXFQ80/100/125/150VBE, FXFA80/100/125/150VBE

2D121703D

FCAG-B

Installation methods

Remote control dimensions

Remote control holder
Installation methods
Installation to wall surface

Receiver detail

Installation methods

Decoration panel

Receiver, Drain side, Piping side, Decoration panel

Designer decoration panel

Receiver, Drain side, Piping side, Decoration panel

Self-cleaning decoration panel

Receiver, Drain side, Piping side, Decoration panel

Front panel	Model name	Option
Decoration panel	BYCQ140E2W1(W)	BRC7FA532F
	BYCQ140E2W1B	BRC7FA532FB
Self-cleaning decoration panel	BYCQ140E2GFW1	BRC7FA532F
	BYCQ140E2GFW1B	BRC7FA532FB
Designer decoration panel	BYCQ140E2P	BRC7FB532F
	BYCQ140E2PB	BRC7FB532FB

3D121750

5 Dimensional drawings

5 - 1 Dimensional Drawings with Accessories

FCAG-B

Installation methods

Decoration panel

Designer decoration panel

Self-cleaning decoration panel

Front panel	Model name	Option
Decoration panel	BYCQ140E2W1(W)	BRYQ140B8
	BYCQ140E2W1B	BRYQ140B8B
Self-cleaning decoration panel	BYCQ140E2GFW1	BRYQ140B8
	BYCQ140E2GFW1B	BRYQ140B8B
Designer decoration panel	BYCQ140E2P	BRYQ140C8
	BYCQ140E2PB	BRYQ140C8B

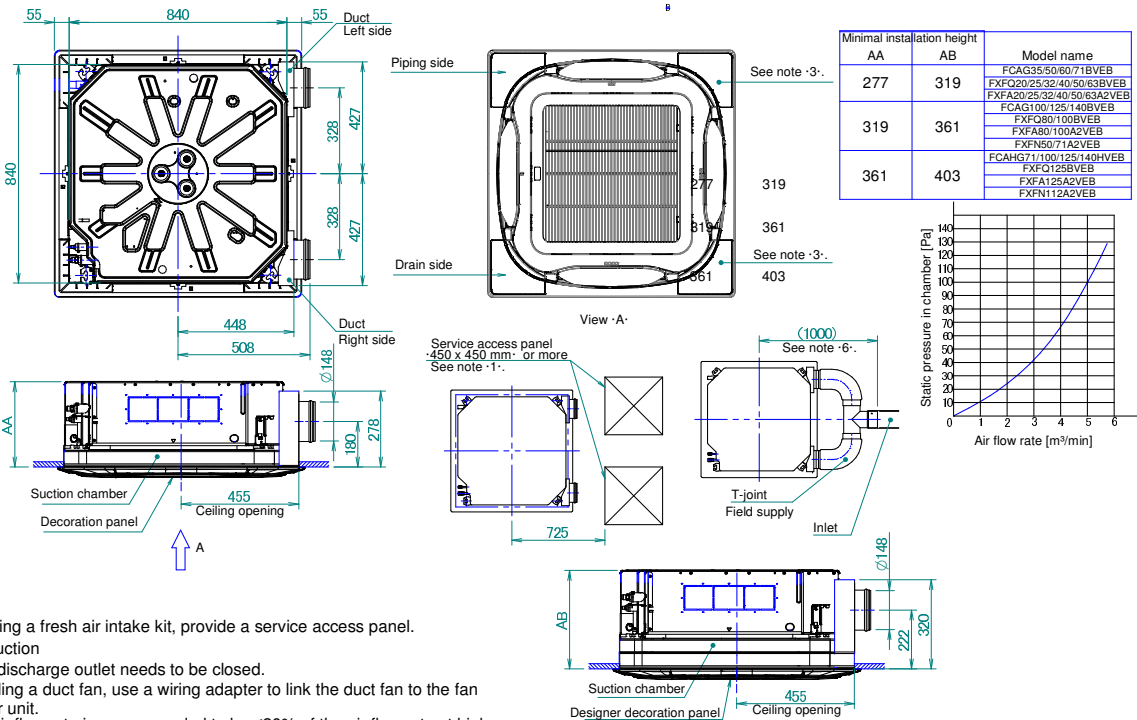
3D121755

5 Dimensional drawings

5 - 2 Dimensional Drawings with Fresh Air Intake

5

FCAG-B
FCAHG-H



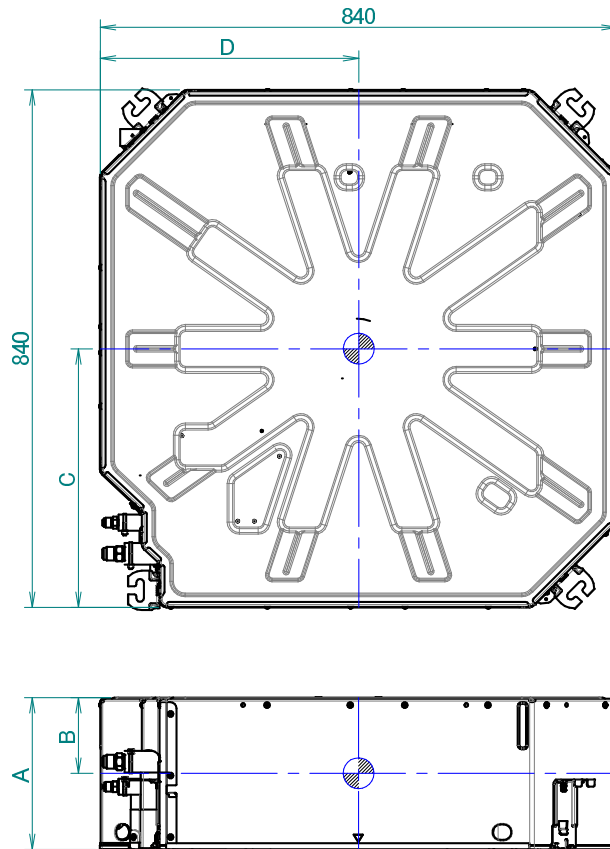
- Notes
- When installing a fresh air intake kit, provide a service access panel.
 - Field construction
 - This corner discharge outlet needs to be closed.
 - When installing a duct fan, use a wiring adapter to link the duct fan to the fan of the indoor unit.
 - The intake air flow rate is recommended to be ≤20% of the air flow rate at high fan speed.
If the intake air flow rate is too large, the operating sound may increase, and the detection of the indoor unit suction temperature may be affected.
 - This indicates the distance between the T-joint inlet and the indoor unit inlet when the T-tube is connected.

3D121741C

6 Centre of gravity

6 - 1 Centre of Gravity

FCAG-B FCAHG-H



Model	A	B	C	D
FCAG35~71BVEB	204	70	400	405
FCAG100~140BVEB	246	100	400	405
FCAHG71~140HVEB	288	135	400	405
FXFQ20~63BVEB, FXFA20~63A2VEB	204	70	395	400
FXFQ80~100BVEB, FXFA80~100A2VEB	246	100	395	400
FXFQ125BVEB, FXFA125A2VEB	288	135	395	400
FXFN50~71A2VEB	246	113	408	412
FXFN112A2VEB	288	120	403	415

4D121659B

7 Piping diagrams

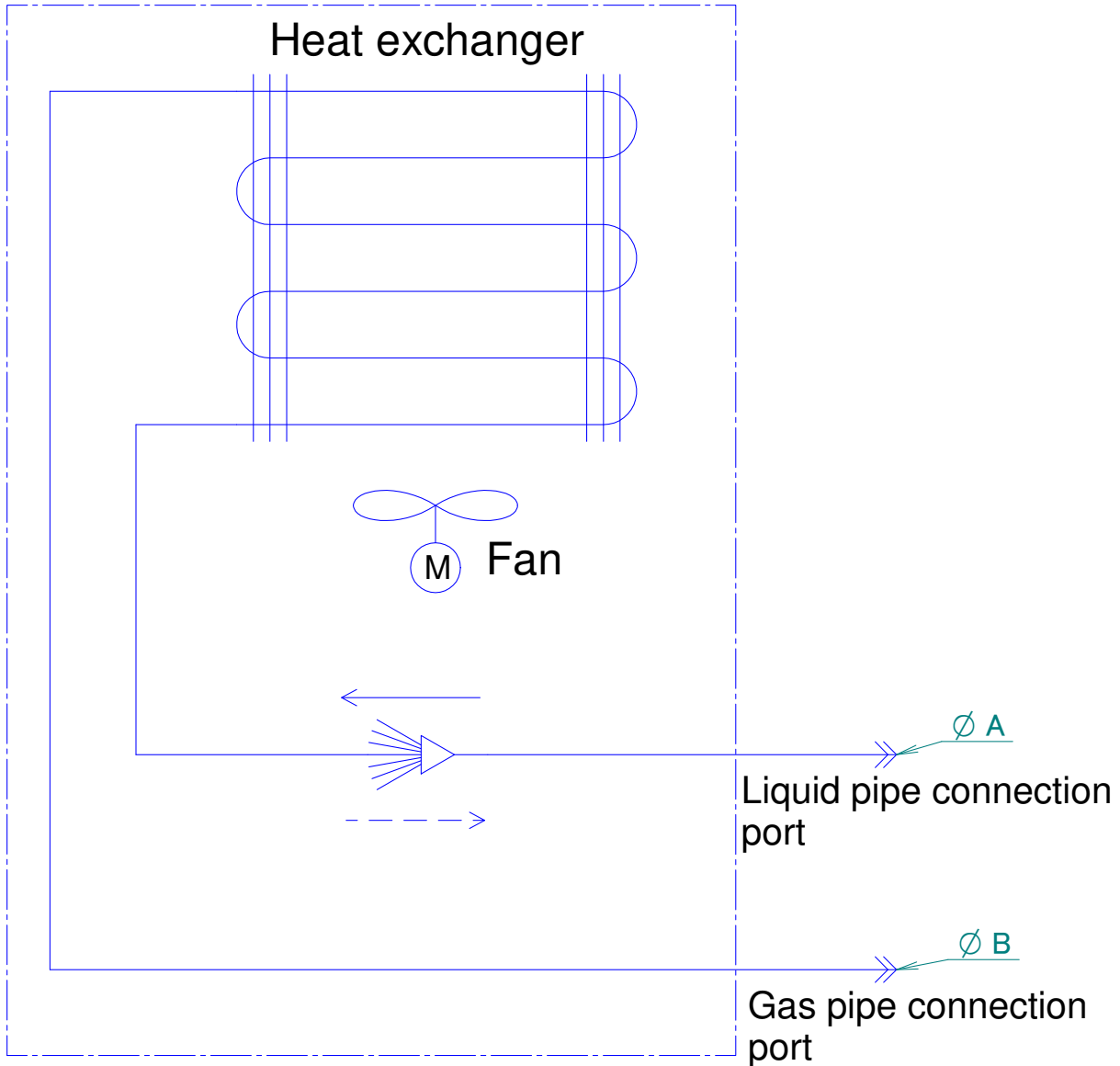
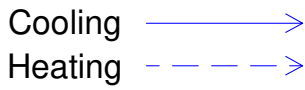
7 - 1 Piping Diagrams

7

FCAG-B

Model	A	B
FCAG35BVEB	6.35	9.52
FCAG50BVEB		12.7
FCAG60BVEB		
FCAG71BVEB	9.52	15.9
FCAG100BVEB		
FCAG125BVEB		
FCAG140BVEB		
FCAHG71BVEB		
FCAHG100BVEB		
FCAHG125BVEB		
FCAHG140BVEB		

Refrigerant flow



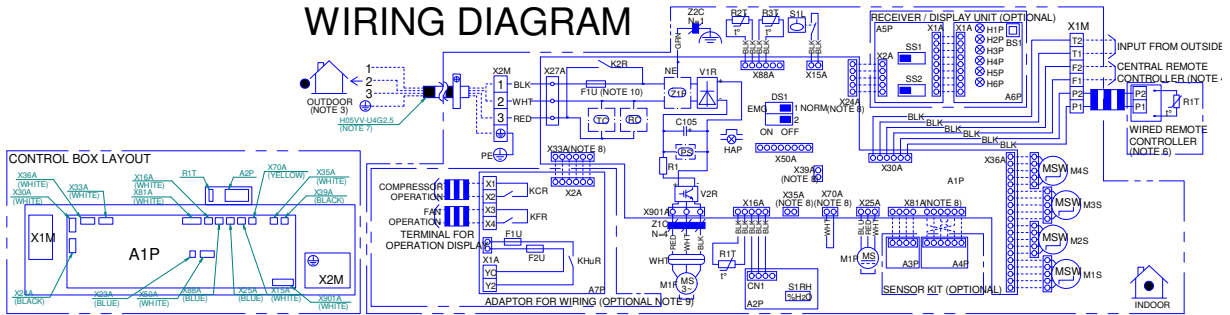
4D121433

8 Wiring diagrams

8 - 1 Wiring Diagrams - Single Phase

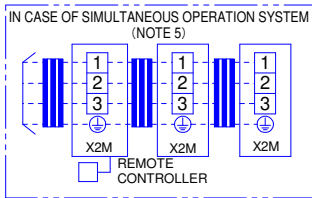
FCAG-B

WIRING DIAGRAM



NOTES:

1. [Symbol]: TERMINAL BLOCK, [Symbol]: CONNECTOR, [Symbol]: FIELD WIRING
2. IN CASE OF SIMULTANEOUS OPERATION INDOOR UNIT SYSTEM, SEE THE INDOOR UNIT WIRING ONLY.
3. FOR DETAILS, SEE WIRING DIAGRAM ATTACHED TO THE OUTDOOR UNIT.
4. IN CASE OF USING CENTRAL REMOTE CONTROLLER, CONNECT IT TO THE UNIT IN ACCORDANCE WITH THE ATTACHED INSTALLATION MANUAL.
5. IN CASE OF SIMULTANEOUS OPERATION SYSTEM, CONNECTED QUANTITY OF THE INDOOR UNITS VARIES ACCORDING TO THE CONNECTED OUTDOOR UNIT.
6. IN CASE OF MAIN/SUB CHANGEOVER, SEE INSTALLATION MANUAL ATTACHED TO THE REMOTE CONTROLLER.
7. SHOWN ONLY IN CASE OF PROTECTION PIPING, USE H07RN-F IN CASE OF NO PROTECTION.
8. X24A, X33A, X35A, X39A, X70A, X81A ARE CONNECTED WHEN OPTIONAL ACCESSORIES ARE BEING USED, SEE WIRING DIAGRAM OF THIS ACCESSORY.
9. CONNECT POWER OF ADAPTER FOR WIRING TO TERMINAL BLOCK (X2M) OF INDOOR UNIT DIRECTLY.
10. FUSE F1U ON MAIN PCB (A1P) IS PRESENT ONLY IN FOLLOWING UNITS: FCAG 35, 50, 60, 71.



WIRE COLORS
 BLK: BLACK RED: RED
 BLU: BLUE WHT: WHITE
 YLW: YELLOW GRN: GREEN
 BRN: BROWN PNK: PINK

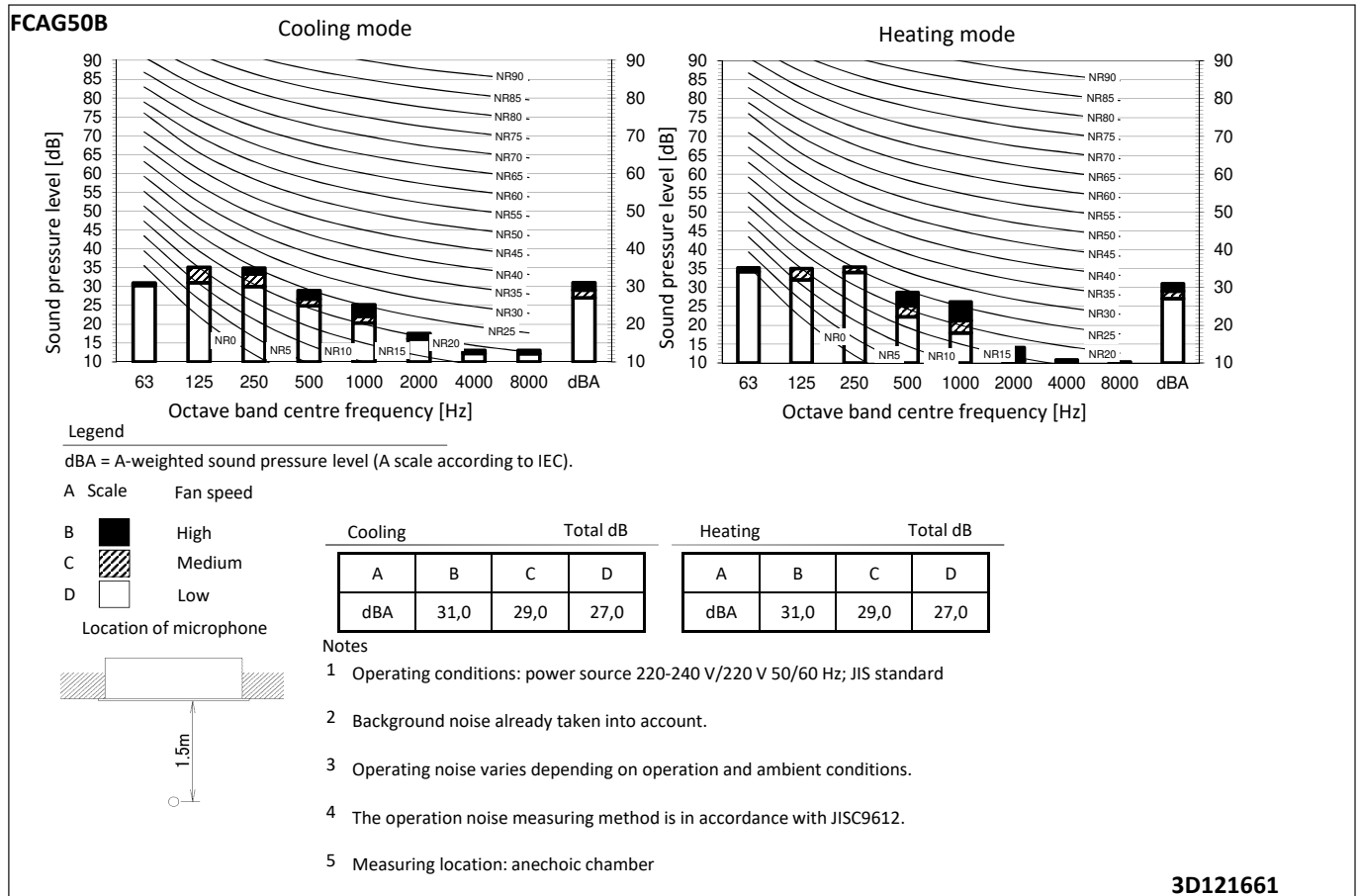
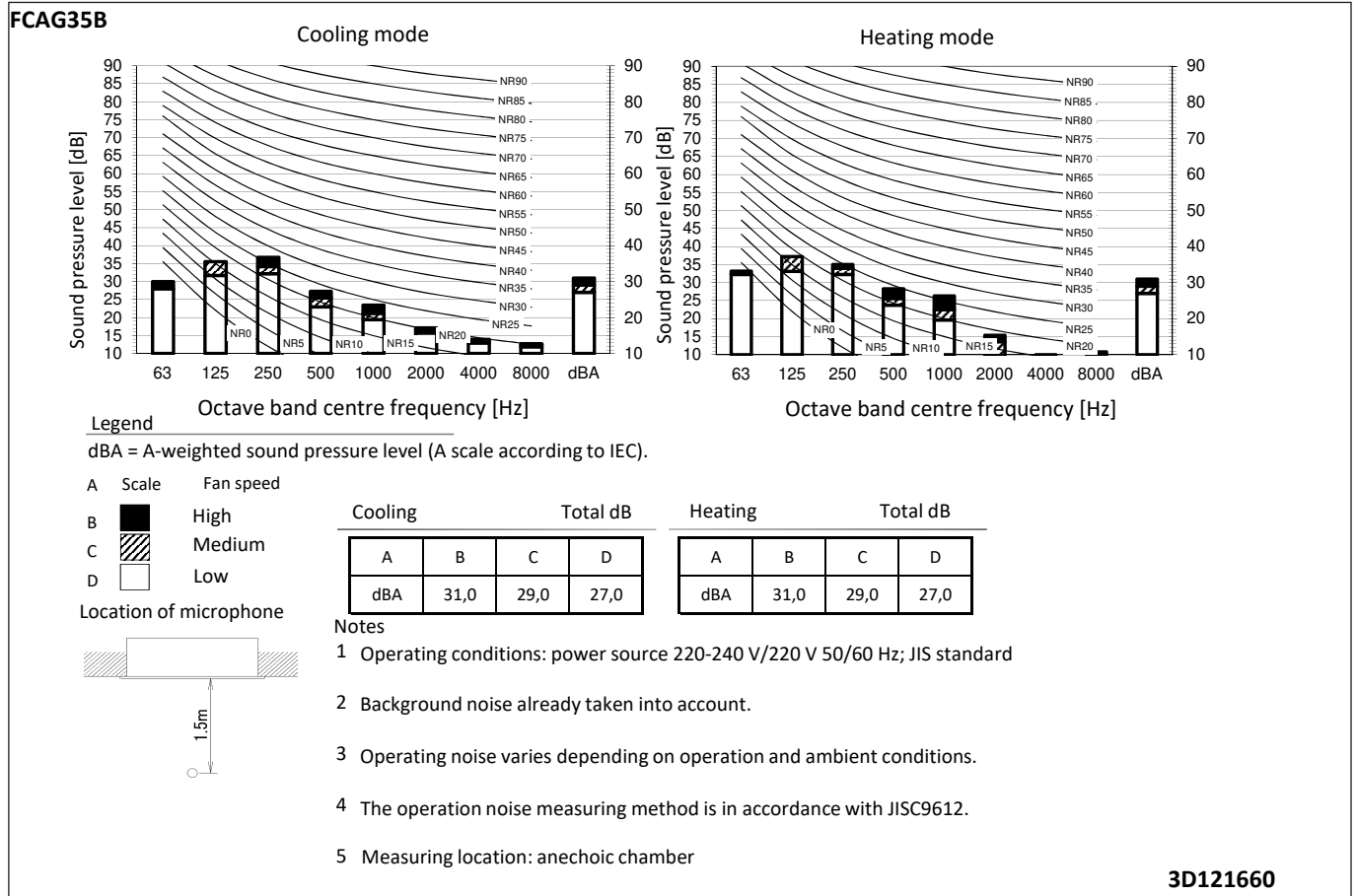
INDOOR UNIT		ADAPTOR FOR WIRING	
A1P	MAIN PCB	H2P	PILOT LAMP (TIMER: GREEN)
C105	CAPACITOR	H3P	PILOT LAMP (FILTER SIGN: RED)
DS1	DIP SWITCH ON PCB	H4P	PILOT LAMP (DEFROST: ORANGE)
F1U	FUSE (T, 3.15A 250V)	H5P	PILOT LAMP (ELEMENT CLEANING: RED)
H4P	FLASHING LAMP (SERVICE MONITOR: GREEN)	H6P	PILOT LAMP (TIMER: GREEN)
K2R	MAGNETIC RELAY	SS1	DIP SWITCH (MAIN / SUB)
M1P	MOTOR (DRAIN PUMP)	SS2	DIP SWITCH
M1F	MOTOR (INDOOR FAN)	SS2	DIP SWITCH (WIRELESS ADDRESS SET)
M1S-M4S	MOTOR (SWING BLADE)	CONNECTORS FOR OPTIONAL PARTS	
R1	RESISTOR	X24A	CONNECTOR (WIRELESS REMOTE CONTROLLER)
R1T	THERMISTOR (AIR)	X33A	CONNECTOR (ADAPTOR FOR WIRING)
R2T, R3T	THERMISTOR (COIL)	X35A	CONNECTOR (AUTO CLEAN PANEL)
S1L	FLOAT SWITCH (DRAIN PUMP)	X70A	CONNECTOR (WI-FI ADAPTOR)
V1R	DIODE BRIDGE	X81A	CONNECTOR (SENSOR KIT)
V2P	IGBT POWER MODULE	X81A	CONNECTOR (SENSOR KIT)
X15-901A	CONNECTOR	X81A	CONNECTOR (SENSOR KIT)
X1M	TERMINAL BLOCK (REMOTE CONTROLLER)	X1-2A	CONNECTOR
X2M	TERMINAL BLOCK (POWER SUPPLY)	CONNECTORS FOR OPTIONAL PARTS	
Z1C, Z2C	FERRITE CORE	X24A	CONNECTOR (WIRELESS REMOTE CONTROLLER)
Z1F	NOISE FILTER	X33A	CONNECTOR (ADAPTOR FOR WIRING)
PS	POWER SUPPLY CIRCUIT	X35A	CONNECTOR (AUTO CLEAN PANEL)
PC	SIGNAL RECEIVER CIRCUIT	X70A	CONNECTOR (WI-FI ADAPTOR)
TC	SIGNAL TRANSMISSION CIRCUIT	X81A	CONNECTOR (SENSOR KIT)
NE	NOISELESS EARTH	X81A	CONNECTOR (SENSOR KIT)
SENSOR KIT			
A3P, A4P	SENSOR KIT PCB	X81A	CONNECTOR (SENSOR KIT)
WIRELESS REMOTE CONTROLLER (RECEIVER / DISPLAY UNIT)			
A5P	RECEIVER PCB	R1T	THERMISTOR (AIR)
A6P	DISPLAY PCB	HUMIDITY SENSOR	
BS1	PUSH BUTTON (ON/OFF)	A2P	SENSOR PCB
X1-2A	CONNECTOR	S1RH	HUMIDITY SENSOR
H1P	PILOT LAMP (ON: RED)	CN1	CONNECTOR

3D116812C

9 Sound data

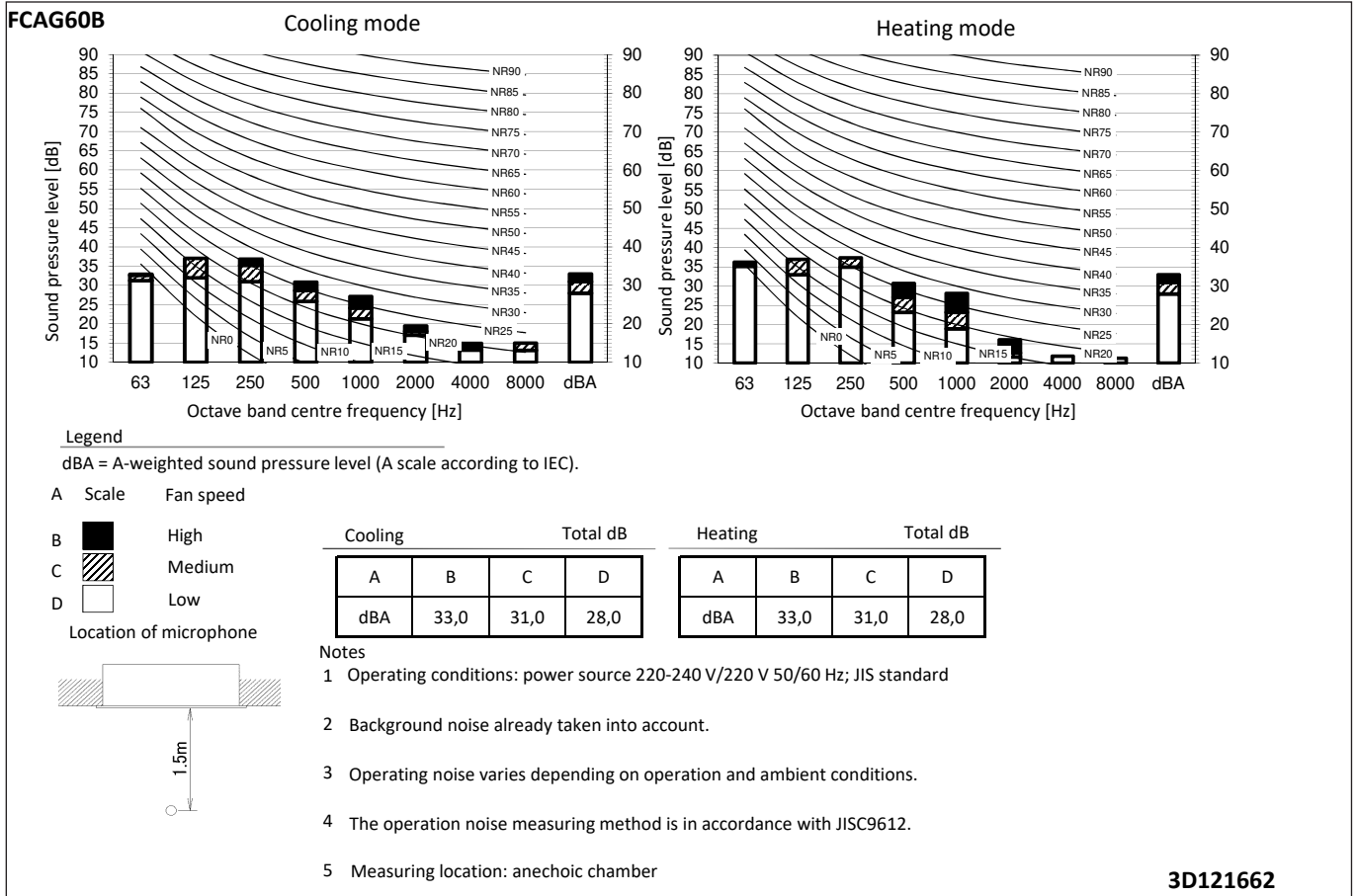
9 - 1 Sound Pressure Spectrum

9

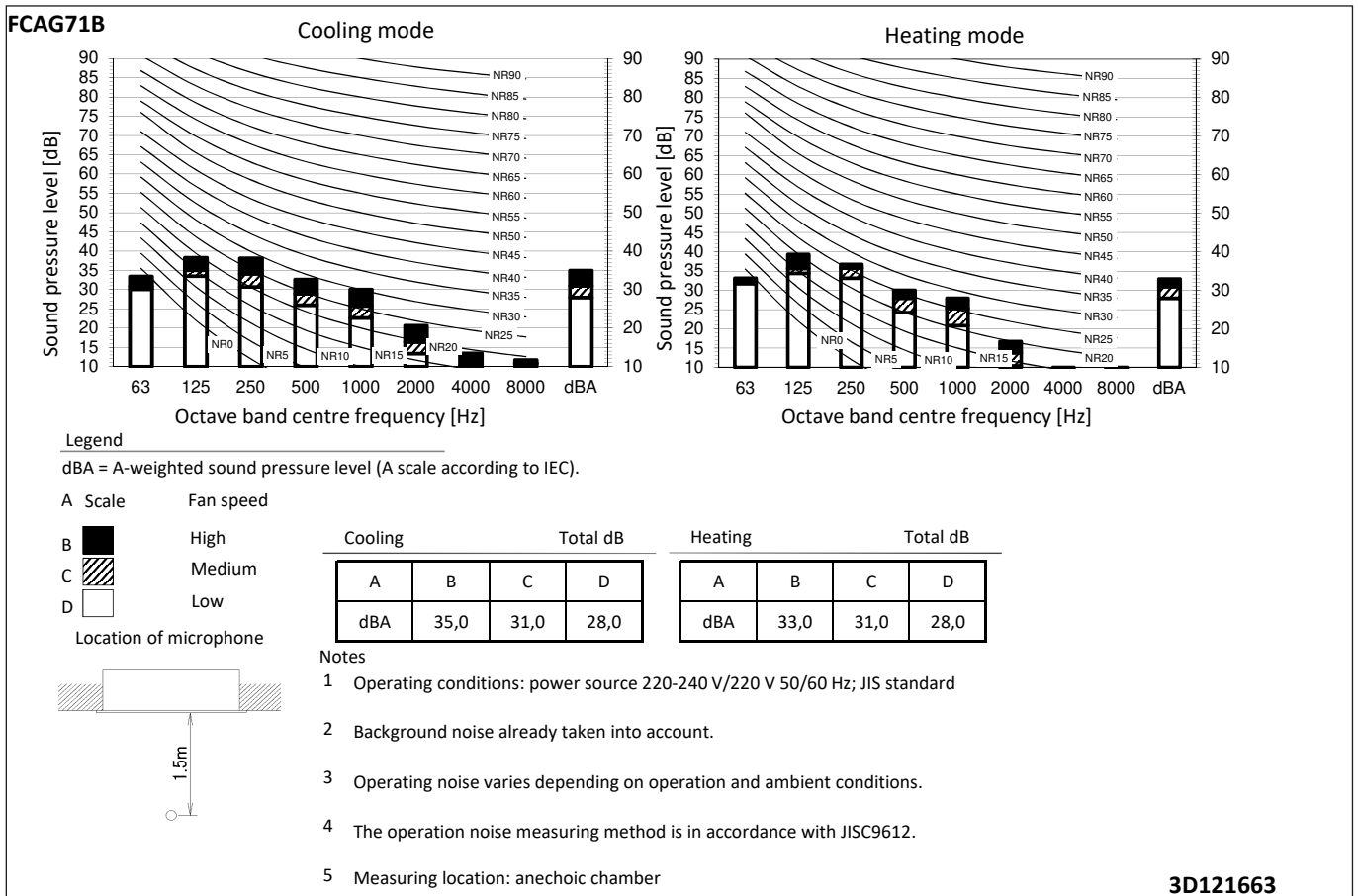


9 Sound data

9 - 1 Sound Pressure Spectrum



3D121662

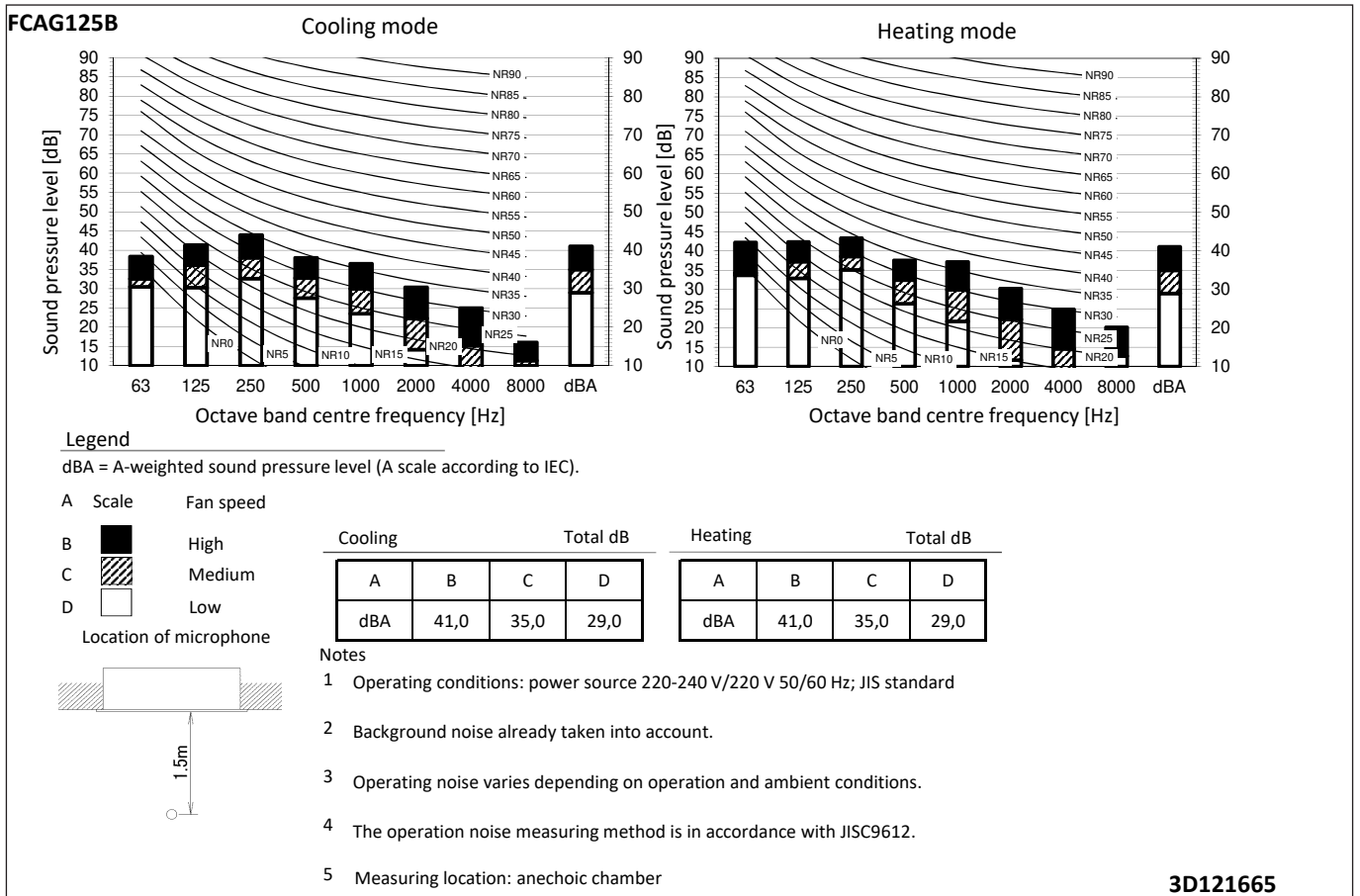
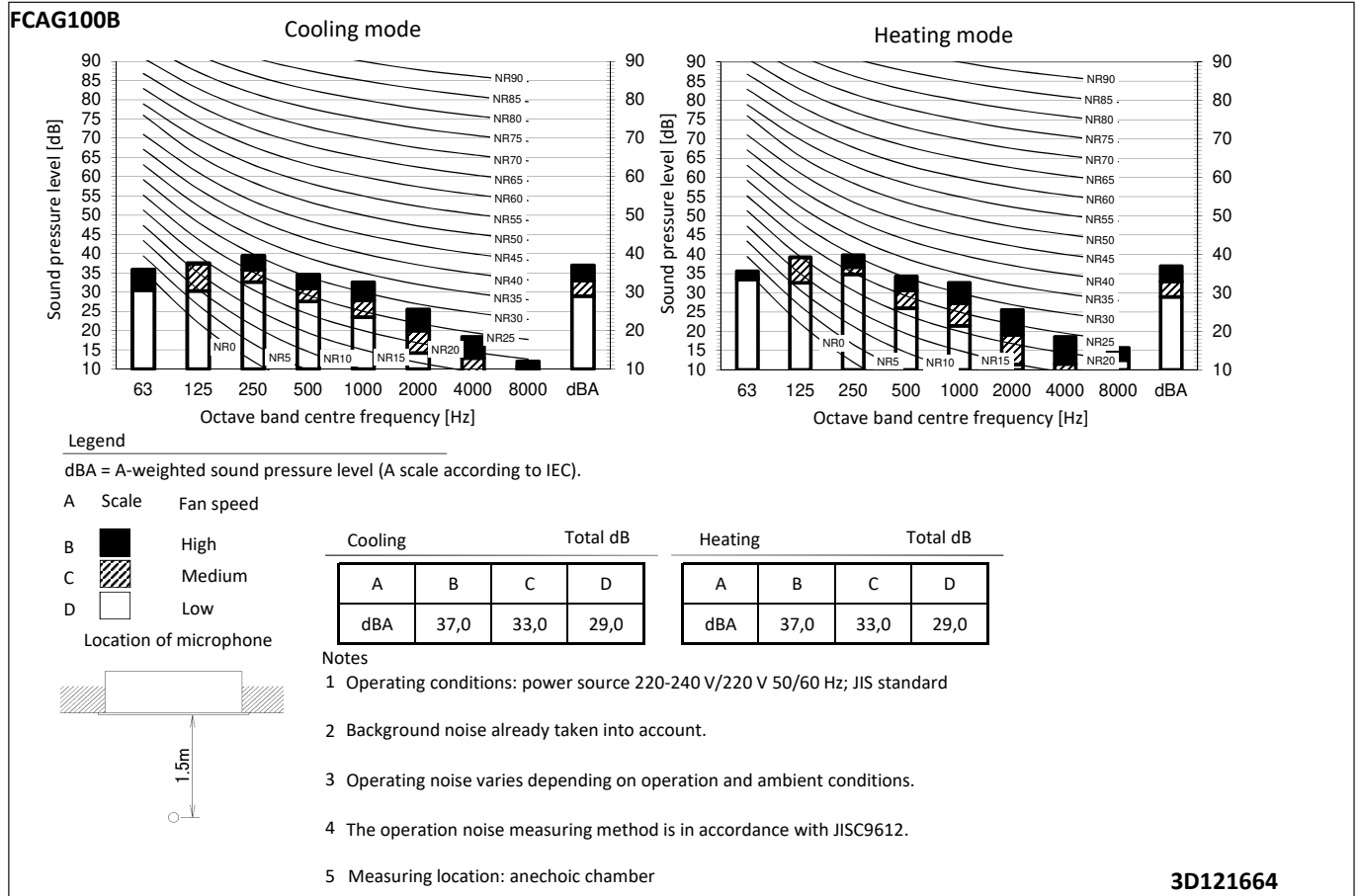


3D121663

9 Sound data

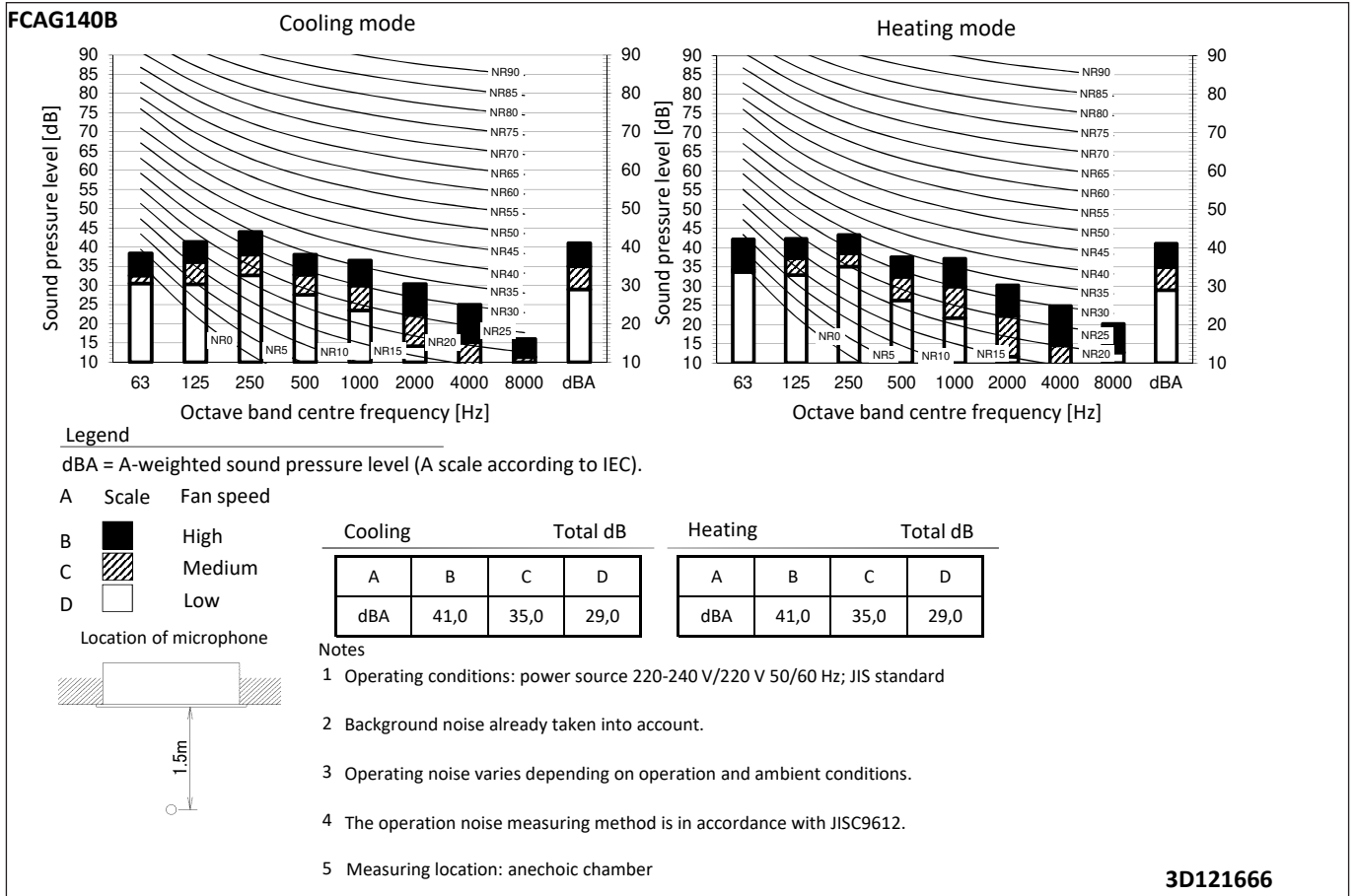
9 - 1 Sound Pressure Spectrum

9



9 Sound data

9 - 1 Sound Pressure Spectrum



10 Air flow patterns

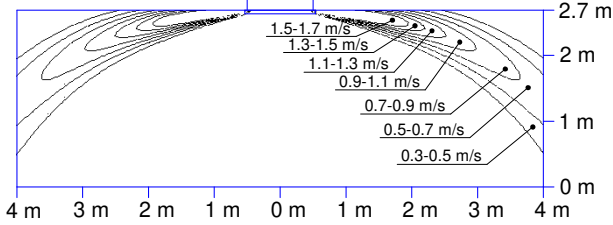
10 - 1 Air flow pattern - Cooling and Heating

FCAG35B

Air velocity distribution (cooling)

Air flow direction: horizontal

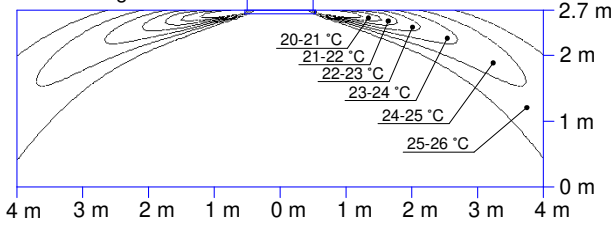
Air discharge: all-round



Air temperature distribution (cooling)

Air flow direction: horizontal

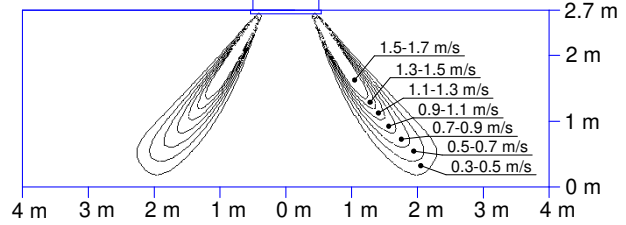
Air discharge: all-round



Air velocity distribution (heating)

Air flow direction: vertical

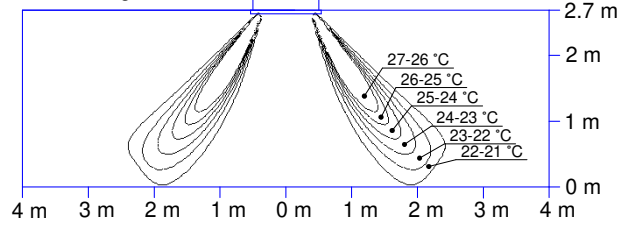
Air discharge: all-round



Air temperature distribution (heating)

Air flow direction: vertical

Air discharge: all-round



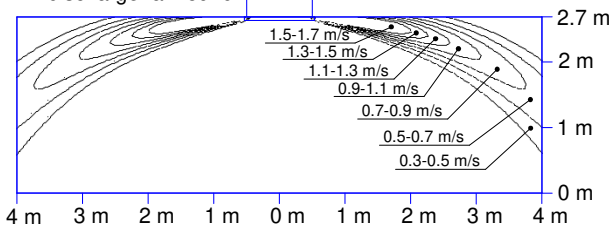
3D121618

FCAG50B

Air velocity distribution (cooling)

Air flow direction: horizontal

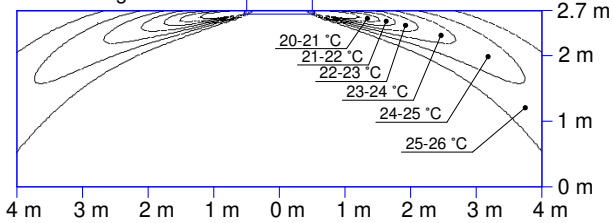
Air discharge: all-round



Air temperature distribution (cooling)

Air flow direction: horizontal

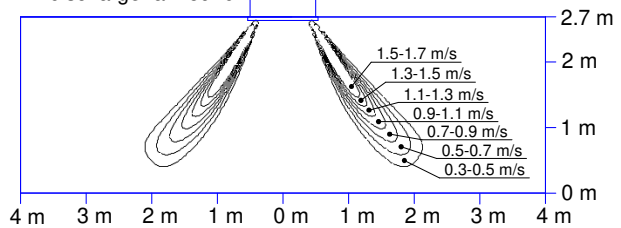
Air discharge: all-round



Air velocity distribution (heating)

Air flow direction: vertical

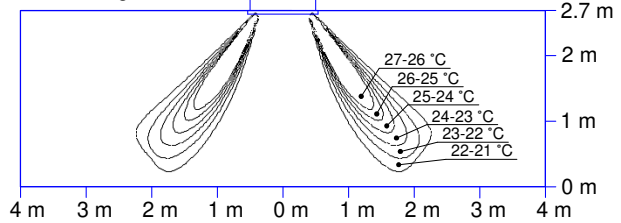
Air discharge: all-round



Air temperature distribution (heating)

Air flow direction: vertical

Air discharge: all-round



3D121619

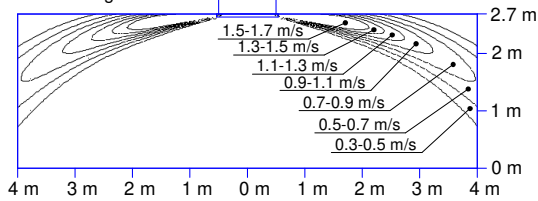
10 Air flow patterns

10 - 1 Air flow pattern - Cooling and Heating

FCAG60B

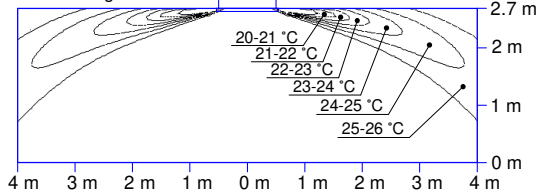
Air velocity distribution (cooling)

Air flow direction: horizontal
Air discharge: all-round



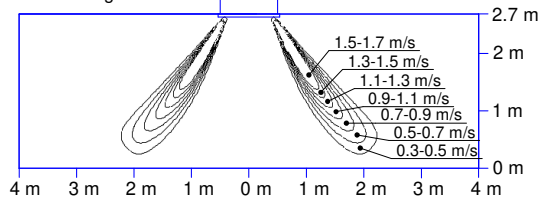
Air temperature distribution (cooling)

Air flow direction: horizontal
Air discharge: all-round



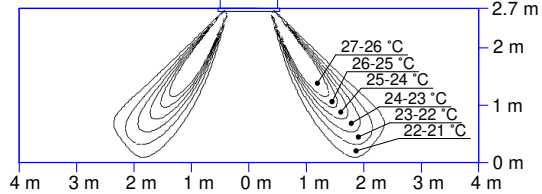
Air velocity distribution (heating)

Air flow direction: vertical
Air discharge: all-round



Air temperature distribution (heating)

Air flow direction: vertical
Air discharge: all-round

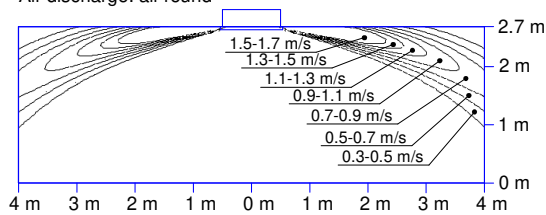


3D121620A

FCAG71B

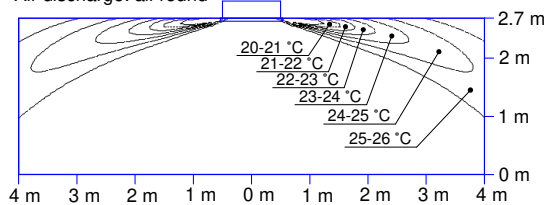
Air velocity distribution (cooling)

Air flow direction: horizontal
Air discharge: all-round



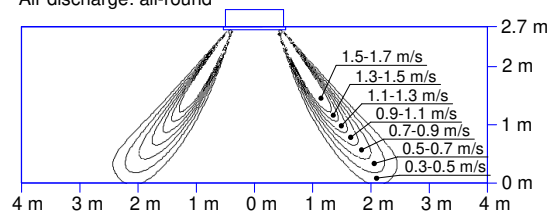
Air temperature distribution (cooling)

Air flow direction: horizontal
Air discharge: all-round



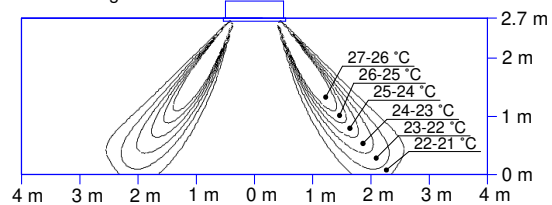
Air velocity distribution (heating)

Air flow direction: vertical
Air discharge: all-round



Air temperature distribution (heating)

Air flow direction: vertical
Air discharge: all-round



3D121621A

10 Air flow patterns

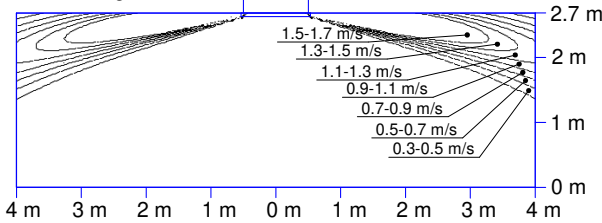
10 - 1 Air flow pattern - Cooling and Heating

FCAG100B

Air velocity distribution (cooling)

Air flow direction: horizontal

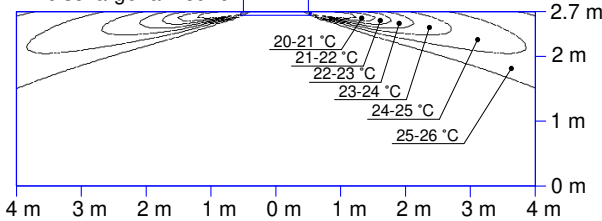
Air discharge: all-round



Air temperature distribution (cooling)

Air flow direction: horizontal

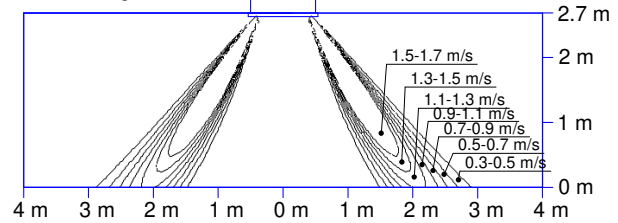
Air discharge: all-round



Air velocity distribution (heating)

Air flow direction: vertical

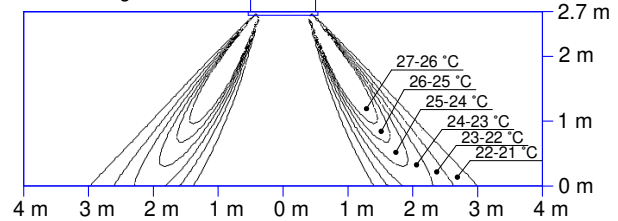
Air discharge: all-round



Air temperature distribution (heating)

Air flow direction: vertical

Air discharge: all-round



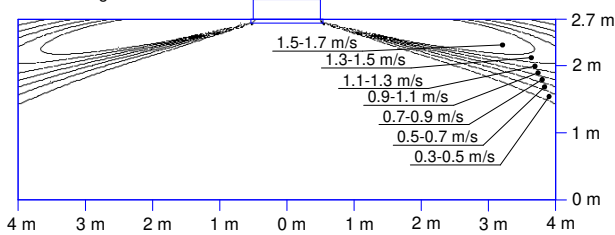
3D121622A

FCAG125-140B

Air velocity distribution (cooling)

Air flow direction: horizontal

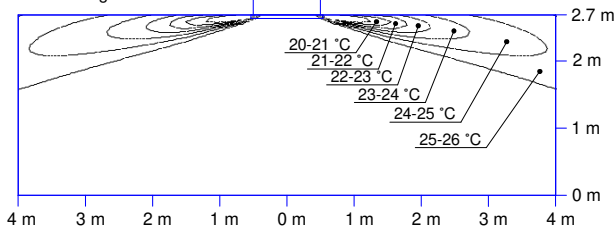
Air discharge: all-round



Air temperature distribution (cooling)

Air flow direction: horizontal

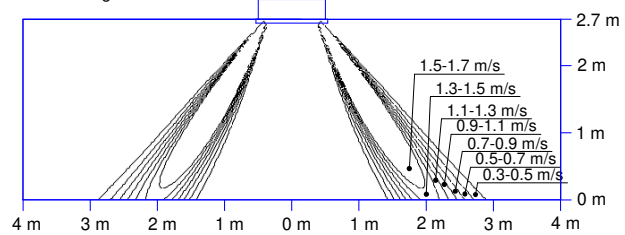
Air discharge: all-round



Air velocity distribution (heating)

Air flow direction: vertical

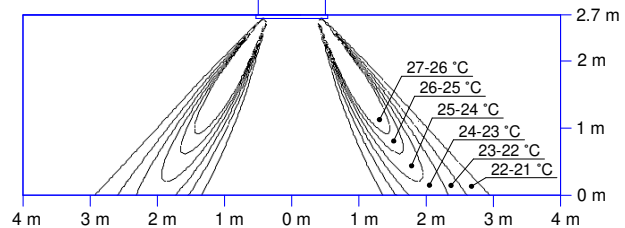
Air discharge: all-round



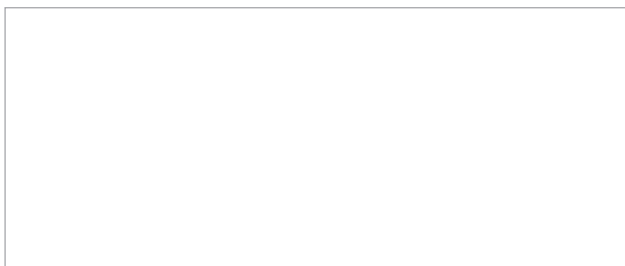
Air temperature distribution (heating)

Air flow direction: vertical

Air discharge: all-round



3D121623



EEDEN24

04/2024



The present leaflet is drawn up by way of information only and does not constitute an offer binding upon Daikin Europe N.V. Daikin Europe N.V. has compiled the content of this leaflet to the best of its knowledge. No express or implied warranty is given for the completeness, accuracy, reliability or fitness for particular purpose of its content and the products and services presented therein. Specifications are subject to change without prior notice. Daikin Europe N.V. explicitly rejects any liability for any direct or indirect damage, in the broadest sense, arising from or related to the use and/or interpretation of this leaflet. All content is copyrighted by Daikin Europe N.V.